



PHI-CON

4W DC-DC Converter P4C-Series

- Wide 2:1 input range
- Low input voltage range 4.5 to 9 V
- Up to 3500 V_{DC} isolation
- MTBF >1.12 Mio. hours
- Continuous short circuit protection



Model guide

Type	Input voltage range [V _{DC}]	Input current		Output voltage [V _{DC}]	Output current min. / max. [mA]	Efficiency typ. [%]	Capacitor load max. (see note 3) [mA]
		No load [mA]	Full load [mA]				
Single output							
P4C053R3S	4.5...9	25	1100	3.3	0...1200	73	1000
P4C0505S	4.5...9	25	1073	5.0	0...800	77	1000
P4C0512S	4.5...9	30	993	12.0	0...333	81	220
P4C0515S	4.5...9	30	991	15.0	0...266	82	100
Dual output							
P4C053R3D	4.5...9	25	1077	±3.3	±0...600	76	2 x 680
P4C0505D	4.5...9	30	1032	±5.0	±0...400	79	2 x 470
P4C0512D	4.5...9	35	996	±12.0	±0...166	81	2 x 100
P4C0515D	4.5...9	40	997	±15.0	±0...133	81	2 x 47

Suffix: "H" for 3.5 kV_{DC} isolation voltage

Specifications

Input	
Filter	LC circuit
Reflected ripple current	35 mA _{p-p} , typ.
Start up time	20 ms, typ.
Isolation:	
Rated voltage (1 minute, input to output)	1500 V _{DC} , Standard 3500 V _{DC} , Suffix "H"
Resistance	10 ⁹ Ω
Capacitance	500 pF, typ.
Output	
Voltage tolerance	± 1 %, max. ± 2 %, max. @ 3.3 V types
Dual outputs cross regulation (see note 1)	± 5 %, max.
Ripple and noise at 20 MHz BW (see note 2)	60 mV _{p-p} , max.
Short circuit protection	Continuous, automatic restart
Current limiting	~150 %, typ. of full load
Line voltage regulation	± 0.5 %, max.
Load voltage regulation	± 0.5 %, max. ± 1.5 %, max. @ 3.3 V types
Temperature coefficient	± 0.02 % / °C
Transient recovery time (see note 4)	250 μs, typ.
Transient response deviation (see note 4)	3 %, max.
General	
Switching frequency	270 kHz, typ.
Reliability calculated MTBF (MIL-HDBK-217F)	1.21 Mio. hours
Safety in accordance with	IEC 60950-1

EMC	
Radiated emissions	EN55022 ClassA
Conducted emissions (see note 5)	EN55022 ClassA
ESD	IEC 61000-4-2 perf. crit. A
RS	IEC 61000-4-3 perf. crit. A
EFT (see note 6)	IEC 61000-4-4 perf. crit. A
Surge (see note 6)	IEC 61000-4-5 perf. crit. A
CS	IEC 61000-4-6 perf. crit. A
PFMF	IEC 61000-4-8 perf. crit. A
Environmental	
Operating temperatur (ambient)	-40 °C to +85 °C
Case temperature	100 °C, max.
Storage temperature	-40 °C to +125 °C
Derating	None required
Humidity	Up to 95%, non-condensing
Cooling	Free air convection
Physical	
Dimensions	31.75 x 20.32 x 10.16 mm
Weight	17 g metal, standard
Potting material	Epoxy (UL94-V-0 rated)
Case material	Nickel coated copper
Absolute maximum ratings	
Input voltage 0.1 s max.	-0.7 V _{DC} ... 15 V _{DC}
Lead soldering Temperature	260 °C for 10 s, distance from package 1.5 mm

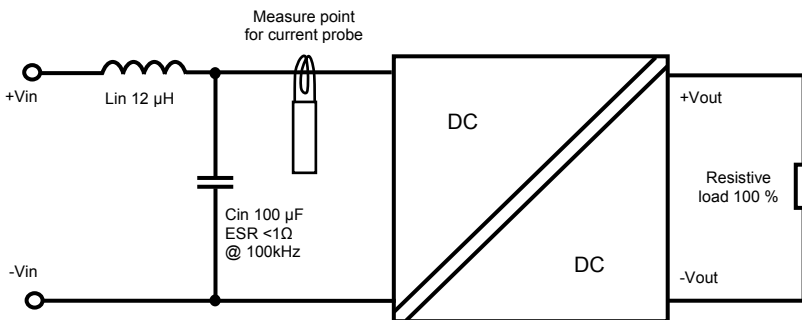
4W DC-DC Converter P4C-Series



Note:

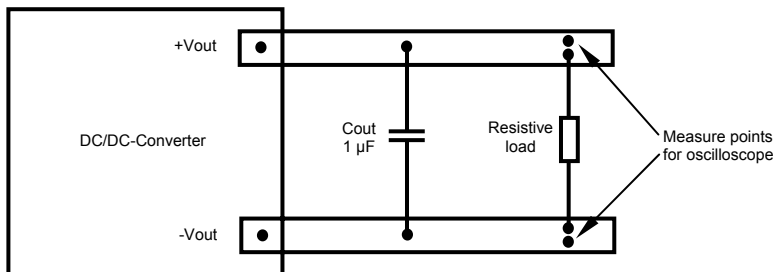
1. If one output load is 25 % to 100 % and the other output load is 100 %, than the output voltage drift rate will be max. $\pm 5 \%$.
2. Ripple and noise measured with a 1 μF ceramic capacitor.
3. Tested by nominal input voltage and constant resistor load.
4. Tested by normal V_{in} and 25 % load step change (75 % - 50 % - 25 % of I_o).
5. It's recommended to add C1 330 μF , C2 470 μF , L 1.8 μH on the input end to achieve EN55022 conducted Class A.
6. An external filter capacitor is required if the module has to meet IEC61000-4-4 and IEC61000-4-5. C1 330 μF , C2 470 μF , L 1.8 μH

Measure circuit for input reflected ripple current



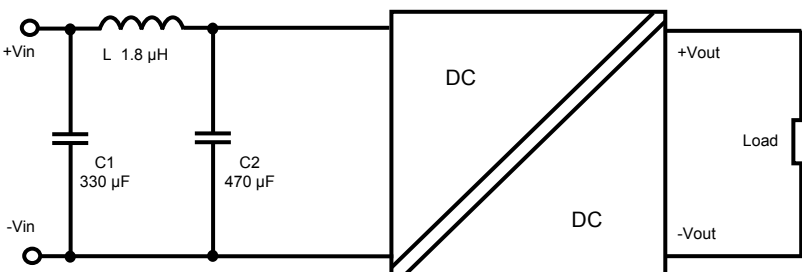
Input reflected ripple current is measured after the input inductor L_{in} and the source capacitor C_{in} at nominal input and full load.

Output Ripple & Noise Measurement Test



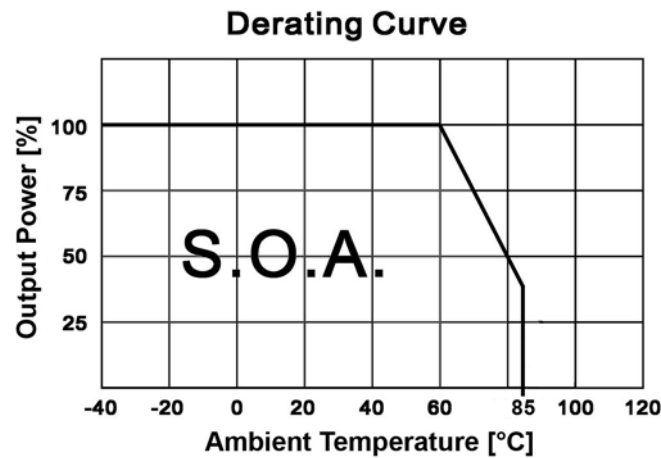
The oscilloscope measurement bandwidth must be better than 20 MHz.

EMI Filter

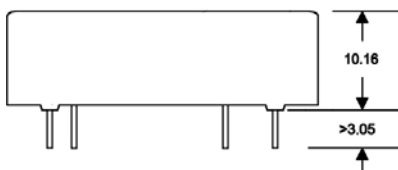
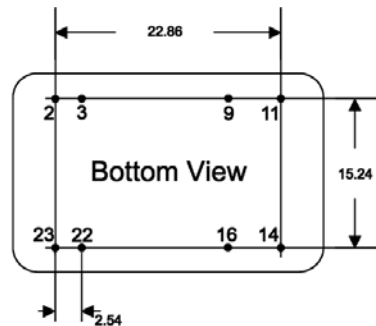
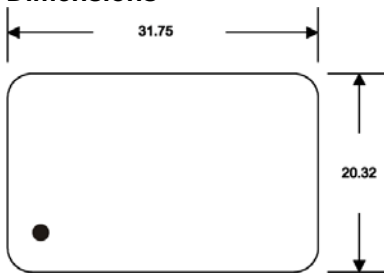


Input filter components C1, C2, L are used to help meet the conducted emissions requirements of the module. These components should be mounted as close as possible to the module. All pins should be minimized to decrease radiated noise.

4W DC-DC Converter P4C-Series



Dimensions



Notes: All dimensions are typical in millimeters
 1. Pin diameter: 0.5 ± 0.05
 2. Pin pitch tolerance: ± 0.35
 3. Case Tolerance: ± 0.5

Pin connections

Pin	Single	Dual
2	-V Input	-V Input
3	-V Input	-V Input
9	Omitted	Common
11	N.C.	-V Output
14	+V Output	+V Output
16	-V Output	Common
22	+V Input	+V Input
23	+V Input	+V Input

PHI-CON is a trademark of HY-LINE power components.

Only for professional use by professionals! Not for resale or distribution to the general public in any way! Read the instructions carefully before using!

Life Support Policy: HY-LINE does not authorize the use of any of its products for use in life support devices or systems without the express written approval of an officer of the Company. Life support systems are devices which support or sustain life, and whose failure to perform, when properly used in accordance with instructions for use provided in the labeling, can be reasonably expected to result in significant injury to the user. Rev: 02.14 f