

## Wi-Fi device range extender by 802.11ah Wi-Fi HaLow™

# EX-150AH-US



Transfer your data farther from your Wi-Fi devices

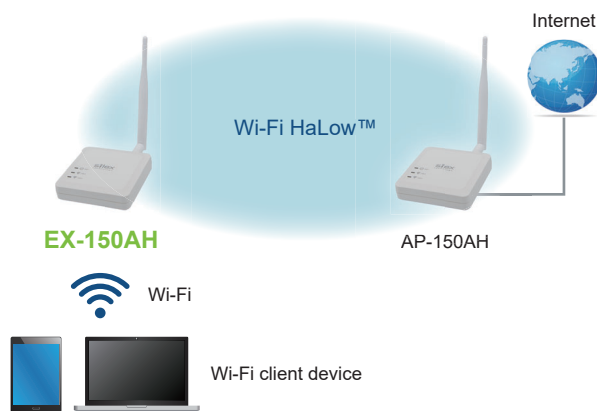
### Product Overview

The EX-150AH-US is the Wi-Fi range extender enabled by Wi-Fi HaLow™. You can use the EX-150AH as your Wi-Fi access point and the data from your Wi-Fi device is sent farther through the Wi-Fi HaLow™ link. With the combination with the AP-150AH-US, you can easily create the wireless coverage for your Wi-Fi device. The EX-150AH has the USB Type-C as the power supply port so that it can be powered from other USB devices such as a laptop, Android tablet or a battery pack for example.

### Benefits

#### Extension of wireless coverage for Wi-Fi devices

The EX-150AH-US bridges the data from Wi-Fi device to the Wi-Fi HaLow™ network under another Wi-Fi HaLow™ access point. The EX-150AH-US transfer the data from a farther place where Wi-Fi does not cover.



### Use cases

- Surveillance/Access control
  - Wi-Fi camera installation where Wi-Fi is not reachable
- Site surveying – construction, etc...
  - Data transfer from legacy 2.4GHz Wi-Fi devices
- Facility maintenance
  - Onsite audit with tablet
- Warehouse/Factory automation
  - Legacy 2.4GHz Wi-Fi device extension with Wi-Fi HaLow™
- Telemetry information gathering
  - Legacy 2.4GHz Wi-Fi telemetry device information transfer over distance
- Wi-Fi range extender at home
  - Replace multiple Wi-Fi extenders



### High data throughput

The EX-150AH-US offers up to 32.5Mbps bit rate for Wi-Fi HaLow™ interface to enable multiple 1080p encoded video streaming, as well as the large data transfer for shorter time.

### Simple Extender Installation

The EX-150AH-US features USB Type-C as the 5V power source so that it can be powered by a Wi-Fi client device with an USB port. The EX-150AH-US and the AP-150AH-US will cover the range where several Wi-Fi extenders are traditionally required.

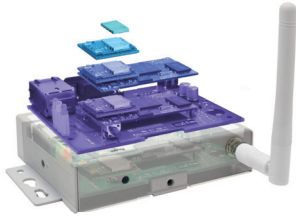
### Key Features

- Compliant with IEEE 802.11ah and 802.11ax
- Wi-Fi HaLow™ station interface
- Wi-Fi 6 access point interface
- Transmission power up to +24dBm in typical
- Up to 32.5Mbps PHY bit rate for Wi-Fi HaLow™
- Open/Enhanced Open/WPA3 security
- 5V power supply from USB Type-C
- 12/24V power supply from DC connector
- Remote device management by AMC manager or embedded web server

Customization Services

Embedded PCBA

Box, custom box, white-labelled product



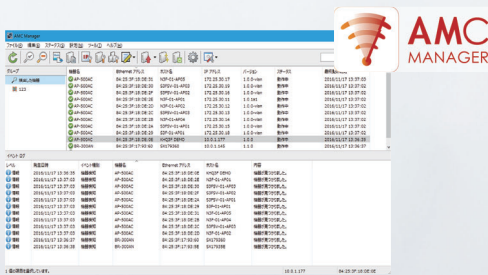
Silex offers a variety of wireless product customization services, from private labeling to rebranding. We can add or change specific features or port our technology to different platforms to suit your application needs. Bring your idea to life and build a high-quality wireless product, leveraging Silex's industry expertise and hardware and software engineering services.

Software

The EX-150AH access point is compatible with the optional device management software, AMC Manager®. With this software, network administrators can remotely manage Silex's networking products.

Remote Device Management Software AMC Manager®

AMC Manager® is an integrated management software that enables remote monitoring and batch configuration of Silex products via IP network. The software can manage up to 10,000 Silex products on the same network, allowing IT administrators to monitor network devices from their own seats.



Product Specifications

Model number	EX-150AH-US
Wired LAN interface	RJ-45 x 1 10BASE-T/100BASE-TX (auto negotiation)
Wireless LAN interface	IEEE 802.11ah (1x1) external antenna IEEE 802.11ax (1x1) internal antenna
Wi-Fi modules	SX-SDMAH-US – Wi-Fi HaLow™ SX-SDMAX – Wi-Fi6
Operating frequency	<ul style="list-style-type: none"> <li>■Wi-Fi HaLow™ – 1/2/4/8MHz – 903Mhz – 927MHz</li> <li>■Wi-Fi 6 – 20MHz channel bandwidth – 2.4GHz: ch1 – ch11 – 5GHz: ch36, 40, 44, 48 (indoor) ch149, 153, 157, 161, 165 (outdoor)</li> </ul>
Security	<ul style="list-style-type: none"> <li>■Wi-Fi HaLow™ Open/Enhanced Open, WPA3-Personal</li> <li>■Wi-Fi 6 Open/Enhanced Open, WPA2-Personal, WPA3-Personal, WPA2/WPA3-Transition mode</li> <li>■Encryption: AES</li> </ul>
Wi-Fi HaLow™ MCS	MCS10 (1MHz only) MCS1 – MCS7 (1/2/4/8MHz)
Wi-Fi 6 MCS	MCS0 – MCS11 (up to 144Mbps)
Operating condition	Temperature: -20°C to 40°C Humidity: 20% - 90% w/o condensation
Storage condition	Temperature: -20°C to 60°C Humidity: 20% - 90% w/o condensation
Power supply	5V +/- 5% (USB Type-C) 12V/24V +/- 5% (DC)
Maximum power consumption	6.25W at 5V or 9.6W at 12V/24V
External dimensions	100mm x 100mm x 25.5mm (excluding antenna)
Weight	150g (including antenna)
Standards	FCC Part15 Subpart B Class B ICES-003 Class B RoHS
Contents	Body, Antenna (AC adapter and USB Type-C cable are not included.)
Optional accessory	Wall-mount kit: Bracket Type VI
Warranty period	5 years

Any questions about the product? Contact our customer support team!

<https://www.silextechnology.com/support/contact-silex-support>

silex technology is a registered trademark of silex technology, Inc. Other product or brand names may be registered trademarks or trademarks of their respective owners. Technical information and specifications are subject to change without notice. © 2024 silex technology, Inc. All rights reserved.

silex global sales & support locations



**US Office**  
silex technology america, Inc.  
+1-657-218-5199  
www.silextechnology.com  
sales@silexamerica.com

**Europe Office**  
silex technology europe, GmbH  
+49-2154-88967-0  
Germany toll free 0800-7453938  
www.silextechnology.com  
sales@silexeurope.com

**China**  
silex technology beijing, Inc.  
+86-10-8497-1430  
www.silex.com.cn  
contact@silex.com.cn

**Corporate Headquarters**  
silex technology, Inc.  
+81-774-98-3781  
www.silex.jp  
support@silex.jp

